

# AHEAD OF THE CURVE

How we think : Where we keep our clients

Volume 3, Issue 1

October 2016

*Ahead of the Curve* is published as a service to clients to identify engineering issues and suggest solutions.

## Commissioning Expertise Sets Ring & Du Team Apart

More than 20 years ago, Ring & DuChateau added value to their engineering design services by hiring individuals with experience in mechanical systems and installation to test the functional design of projects. Recognizing that this testing, now known as commissioning (Cx), helped R&D keep ahead of pace in its range of services to clients, the company committed in 2006 to creating its own Commissioning department. Since, the department has expanded in staff, expertise, experience and client-base, making its services available for both R&D designed projects and outside-designed projects.

“From experience, we knew that controls and their proper operation was the main driver of a successful project,” said Ring & DuChateau President Dave DuChateau of the decision to hire Dave Guberud as the company’s first in-house commissioning provider (CxP). “We brought Dave on board because of his history working with us and his control knowledge.”

### COMMISSIONING:

“A quality-focused process for enhancing the delivery of a project ... and to meet the Owner’s Project Requirements”.

- ASHRAE Guideline 0-2013 definition for Commissioning (Cx)

specific and complementary skills to the team. Their backgrounds vary from mechanical contracting to LEED design to mechanical systems design to system installation.

“Our team members all have their niches. We each lead our own projects, but we collaborate to best use each other’s strengths to benefit each project,” Guberud explained about the Commissioning work process. “While we all have excellent training and credentials, each of us brings real people skills to our projects as well.”

The R&D MEPT design team remains a key resource to the Commissioning team.

“With Ring and DuChateau’s depth of resources, there is not an MEP commissioning process, either new or existing building, that cannot be accomplished by our team,” Guberud said.

With increasing demand, the department has grown in the past 10 years to a staff of 5 full-time commissioning providers, each of whom brings

### Meet the Ring & DuChateau Commissioning Team



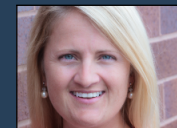
Dave Guberud, CxA, QCxP



Rachel Rueckert, QCxP, LEED AP BD+C



Jeffrey Doyle, QCxP



Shana Jones, DE

To find out if your project needs commissioning, see reverse side.

For more information on Ring & DuChateau commissioning services, call 414.778.1700.





## Does Your Project Need Commissioning?

Commissioning provides clients and owners with assurance that their project has been completed successfully. It ensures:

- Compliance with contractual obligations
- High quality of construction
- Correctly operating system functions
- Environmentally safe and energy efficient operating systems
- Complete as-built and operating/maintenance information is passed on to owners and operating staff.

Commissioning should be provided for:

- New Construction and Major Retrofits
- Medium or Large energy management control systems (more than 50 control points)
- Unusually complex mechanical or electrical systems

To find out whether commissioning is needed for your project, contact the Ring & DuChateau Commissioning staff at 414.778.1700.

Ring & DuChateau Commissioning providers Dave Guberud (left) and Jeff Doyle (right) spot checking and documenting that items marked complete by the contractor are actually complete.

**RJ** RING & DUCHATEAU  
Consulting Engineers  
17400 W. Capitol Drive  
Brookfield, WI 53045

414.778.1700  
[www.ringdu.com](http://www.ringdu.com)

*Ahead of the Curve is a quarterly publication from Ring and DuChateau Consulting Engineers. Our content serves to identify issues and their impact, and suggest a solution. Ahead of the Curve - It's how we think, and where we keep our clients.*